

Resolution 2017-0006
Of the
Plumas Local Agency Formation Commission
in
Plumas County, California

Making Determinations and Approving Reorganization of Quincy Community Services District and East Quincy Services District

WHEREAS, a joint application was filed with the Executive Officer of the Plumas Local Agency Formation Commission by two Community Service Districts organized under the provisions of Government Code Section 61000, et seq, the Quincy Community Services District ("QCSD") and the East Quincy Services District ("EQSD"). The application proposes a reorganization resulting in dissolution of both districts and formation of a new successor district (American Valley Community Services District), and transfer of all the resources, revenues and responsibilities of the QCSD and EQSD to the new American Valley Community Services District. Said application complied with all the requirements of law and the Commission; and,

WHEREAS, the proceedings for this reorganization are governed by the Cortese-Knox-Hertzberg Local Government Reorganization Act of 2000, Section 56000 et seq. of the Government Code; and,

WHEREAS, in October 2007, the Commission approved a joint Municipal Service Review and adopted a joint sphere of influence for the QCSD and the EQSD, making the required determinations regarding the four factors relevant to determining spheres of influence identified in G. C. Section 56425; and by Resolution 2007-015 recorded those determinations; and,

WHEREAS, this joint proposal is consistent with the spheres of influence for each district as adopted by the Commission in October 2007; and,

WHEREAS, the Districts have jointly developed a Plan for Service that sets forth the terms of the reorganization and transfer of service, including transfer of assets, property, personnel and equipment; and,

WHEREAS, the East Quincy Services District, acting as the Lead Agency for this project in accordance with the provisions of the California Environmental Quality Act, has reviewed the reorganization proposal and has found that it qualifies for exemption under Class 20: Changes in Organization of Local Agencies, where the changes do not change the geographical area in which previously existing powers are exercised and that it will not result in adverse changes to the environment nor to the level or scope of services provided; and,

WHEREAS, at the time and in the manner provided by law, the Executive Officer gave notice of the date, time, and place of a public hearing by the Commission upon said application, including mailed notice to affected and subject agencies as well as to several homeowners' associations and published notice in several newspapers of general circulation in order to that ensure agencies, affected citizens and landowners were aware of the proposal; and,

WHEREAS, the Executive Officer has reviewed the application and has prepared a report including staff recommendations thereon within the time required by law and has furnished copies of said report to the Commission and to all other persons required by law to receive it; and,

WHEREAS, the Commission has heard all interested parties desiring to be heard at the public hearing and considered the application and report by the Executive Officer and all other relevant evidence and information presented at said hearing;

NOW, THEREFORE, the Plumas Local Agency Formation Commission determines the following:

1. The foregoing recitals are true and correct.
2. The territory comprises approximately 4,070 acres more or less and is found to be inhabited.

3. The Commission adopts the determinations regarding consistency with LAFCo Policies contained in the staff report for this reorganization and incorporates them by reference herein.
4. The change of organization is assigned the following distinctive short-term designation:
*Dissolution of the Quincy Community Services District and East Quincy Services District;
Formation: American Valley Community Services District (Plumas LAFCo File No. 2017-0002)*
5. The Commission concurs with the Quincy Community Services District finding that this project qualifies for a Categorical Exemption to CEQA under Class 20 - *Changes in the organization or reorganization of local governmental agencies where the changes do not change the geographical area in which previously existing powers are exercised.*
6. The boundaries, as set forth in this reorganization (or as amended by action of the Commission), are hereby approved as submitted and are as described in Exhibits "A" Boundary Description and "B" Map attached hereto and by this reference incorporated herein subject to the terms and conditions included.
7. This reorganization consists of the following jurisdictional changes:
 - Quincy Community Services District – Dissolution and transfer of services
 - East Quincy Services District – Dissolution, and transfer of services
 - American Valley Community Services District – Formation and assumption of services

NOW, THEREFORE, the Commission resolves and orders the following:

1. **Conditions**

1.1. Approval of Proposal

The proposal is to form the American Valley Community Services District, which is to include all the territory formerly in the East Quincy Services District and Quincy Community Services District. In addition to LAFCo's Terms and Conditions, this reorganization shall subject to terms and conditions as stated in the initiating resolutions included in the following documents all of which documents are by this reference incorporated herein:

- Resolution 2017-02 adopted May 11, 2017 by the Quincy Community Services District;
- Resolution 297 adopted May 9, 2017, by the East Quincy Services District;
- Plan for Services developed by the Quincy Community Services District and the East Quincy Services District as set forth in Resolutions 2017-02 (QCSD) and 297 (EQSD).

1.2. Transfer of Services

The authority of Quincy Community Services District to provide wastewater collection and treatment services, domestic water services and solid waste collection services and the authority of the East Quincy Services District to provide wastewater collection services and domestic water services is hereby transferred to the American Valley Community Services District entirely, and the American Valley Community Services District is hereby designated as the "successor agency" to both the Quincy Community Services District and the East Quincy Services District with respect to such services. American Valley Community Services District shall succeed to all licenses, permits and authorities and all obligations and responsibilities of the Quincy and East Quincy Services District. The authority to provide solid waste services shall expire on or before January 1, 2025, unless the Commission authorizes an extension.

1.3. Benefit Zones

Pursuant to Item 14 the Resolutions of Application adopted by the two districts, two service divisions or areas (zones) of benefit shall be established by the American Valley Community Services District to ensure that the debts and obligations of the respective dissolved districts are borne by the residents of the territory of the district which incurred the debt or obligation.

These service divisions, areas (zones) of benefit, and/or such other structure is to ensure that the debts and obligations of the respective Reorganized and/or Dissolved Districts are borne by the customers residing in the territory which incurred the debt or obligation. The service zones, areas of benefit, or other structures will correspond to the respective existing service territory of the Dissolved Quincy Community Services District and East Quincy Services District.

1.4. Effective Date

This reorganization shall be effective upon the recordation of this Certificate of Completion, which shall take place after compliance with the terms and conditions stated in this resolution and before May 1, 2018.

1.5 The American Valley CSD is hereby authorized to perform the following services:

Domestic Water Treatment and Distribution

Wastewater Collection and Treatment

Solid Waste Collection services.

2. **Financial Conditions**

1.5. Transfer of Property

As specified in the Resolutions of Application, after the effective date of this resolution, all resources and assets of both the Quincy Community Services District and the East Quincy Services District, including facilities, equipment, fixtures, tools, vehicles, real property, as well as management and control thereof, will be transferred to and accepted by the American Valley Community Services District upon the effective date of this reorganization. The American Valley Community Services District will accept such assets "as-is" with all leases or other liabilities attached thereto.

1.6. Transfer of Revenues, Expenses, Assets and Fund Balances

As specified in the Resolutions of Application, after the effective date of this reorganization, the revenues, expenses, assets and fund balances of the Quincy and East Quincy Services Districts will be transferred to the American Valley Community Services District.

1.7. Property Tax Transfer

As specified in the Resolutions of Application, after the effective date of this reorganization, all revenues from property tax collected within and attributable to the jurisdiction of the each district shall be transferred to the American Valley Community Services District upon the effective date of this reorganization.

1.8. Transfer of Previously Authorized Assessments and Associated Fund Balances

The East Quincy Sewer Assessment, adopted by the East Quincy Services District levied for the purpose of providing wastewater services in 1993, along with any associated fund balances, is hereby continued, and authority to administer the assessment is transferred to the American Valley Community Services District. Likewise the continuation of any previously authorized tax, fee, assessment or charge shall be automatically extended to the appropriate benefit zone within the American Valley CSD after recordation of the dissolution of the East Quincy CSD and the Quincy CSD and the formation of the American Valley CSD.

1.9. Use of Assessment Roll

The regular county assessment roll will be utilized for this change of organization.

1.10. Appropriations Limit

Pursuant to Section 7902.7 and Article XIII B of the State Constitution, the Commission hereby transfers the existing appropriations limits of the Quincy and East Quincy CSDs to the successor American Valley Community Service District, as the agency's provisional appropriations limit, as of the effective date of this reorganization.

1.11. Bonded Indebtedness

No existing bonded indebtedness shall be affected by this change of organization.

1.12. Insurance

The newly formed American Valley CSD shall make provisions to acquire liability and property insurance prior to recordation of the Certificate of Completion.

2. Operational Conditions

2.1. Ordinances and Resolutions

All East Quincy Services District ordinances, resolutions, policies and fee schedules are hereby extended to the Zone A of the American Valley Community Services District, unless and until superceding ordinances, resolutions, policies and fee schedules are adopted by the American Valley Community Services District.

All Quincy Community Services District ordinances, resolutions, policies and fee schedules are hereby extended to the Zone B of the American Valley Community Services District, unless and until superceding ordinances, resolutions, policies and fee schedules are adopted by the American Valley Community Services District.

2.2. Service Plan

The Plan for Services provided in the Resolutions of Application submitted by the Quincy Community Services District and the East Quincy Services Districts, shall guide the Board of Directors of the American Valley Community Services District as to the manner in which services are provided in the affected territory.

2.3. Board of Directors

The Board of Directors of the American Valley Community Services District shall be as set forth by Item 6 of the Resolutions of Application. Pursuant to Government Code section 61030, the Board of Directors for the Consolidated District shall initially comprise eleven members, and shall initially be composed of the ten existing members of the East Quincy Services District and the Quincy Community Services District who shall make provision for appointment of the eleventh Board Member as permitted by Government Code Section 61030(c). These directors shall continue to serve and be subject to reelection pursuant to all applicable provisions of law, provided that the Board of Directors shall be reduced to five members pursuant to section 61030(b) Voting for the Board of Directors of the Consolidated District shall be at large.

2.4. Personnel and Retirement

Item 10 of the Resolutions of Application shall govern as to provisions regarding the transfer of personnel and volunteer staff to American Valley Community Services District, provided, however, that in the event of a conflict between the Resolutions and any applicable law, the law shall prevail.

Item 10 is as follows:

- a. *The current full-time and part-time employees of the Dissolved Districts shall be transferred to, and become employees of the Consolidated District. The terms and conditions of employment for the employees of the Consolidated District shall be as determined by the Board of Directors of the Consolidated District.*
- b. *Probationary employees of both the Dissolved Districts will continue in a probationary status with the Consolidated District until completion of their remaining probationary period unless otherwise determined by the Board of Directors of the Consolidated District.*
- c. *The Consolidated District will have a general manager and the Board of Directors may determine such other positions as. The identify of the general manager shall be determined by the Board of Directors.*
- d. *To the extent required by the California Public Employees Retirement System (PERS), the Board of Directors of the Consolidated District shall take action immediately upon the formation of the Consolidated District to enter into a contract with PERS to provide to the employees of the Consolidated District such as benefits as are offered by PERS and as may be determined by the Board of Directors.*

Likewise, All assets and liabilities of the Dissolved Districts' respective contracts with Cal PERS will be transferred to the Consolidated District.

Prior to the effective date of this reorganization, the Boards of Directors of the Quincy and the East Quincy Services Districts shall establish a committee to review alternatives, and consider a recommendation to the Board of Directors of the American Valley Community Services District relative to personnel issues, including parity of retirement benefits.

3. Spheres of Influence

3.1. Sphere of Influence

The Sphere of Influence Plan for American Valley Community Services District will include the territory included in the Quincy and East Quincy Services Districts joint sphere of influence adopted by Plumas LAFCo on October 22, 2007, by Resolution 2007-15. LAFCo shall adopt an updated Sphere of Influence for the American Valley CSD within one year of its formation.

4. Commission Directions to Staff

- 4.1. LAFCo is the conducting authority for this reorganization. In accordance with the provisions of Section 57000 of the Government Code and with Plumas LAFCo Policies, the Commission hereby directs the Executive Officer to schedule a protest hearing for this matter after the expiration of the reconsideration period specified by Section 56895; to conduct the hearing for this reorganization; and, upon completion of the hearing, to take action as appropriate in accordance with LAFCo Policies and the requirements of Chapter 3, Part 4 of Division 3 of the California Government Code.
- 4.2. The Executive Officer is hereby directed to transmit a certified copy of this resolution to each affected agency, as provided for in Government Code Section 56882.
- 4.3. The Executive Officer is hereby directed to file a Notice of Exemption to the provisions of CEQA.
- 4.4. Five sets of copies of all exhibit maps and geographic or metes and bounds descriptions, two 8 1/2 reductions of all maps and electronic copies in PDF format meeting the state Board of Equalization Requirements shall be submitted to LAFCO prior to the recordation of the Certificate of Completion. All maps and boundary descriptions shall comply with the State Board

of Equalization requirements. Any boundary description and (or) map, if rejected by the State Board of Equalization or amended by LAFCO, will be revised at the expense of the applicant. The applicant shall be responsible for all associated costs. The boundary description and map if amended by action of the Commission will be revised and checked at the expense of the applicant, prior to filing of the Certificate of Completion. The Boundary Description and Map must contain the following corrected information: LAFCO File 2017-0002 Reorganization of Quincy Community Services District and East Quincy Community Services District: American Valley Community Services District (Plumas LAFCo File No. 2017-0001) and reflect the exchange of territory whereby the EQSD detached 2.88 acres and concurrently annexed the 2.88 acres of territory to the Quincy Community Services District (Plumas County recorded document 2016-0001449).

- 4.5. Any and all Plumas County, Plumas LAFCO and State of California fees or costs must be paid in full prior to filing the Certificate of Completion. LAFCO will forward invoices and (or) a list of required fees prior to filing the Certificate of Completion for direct payment to the agency by project proponent.
- 4.6. Approval of this reorganization is conditioned upon the applicant's obligation to defend, indemnify, and hold harmless the Plumas Local Agency Formation Commission and its agents, officers and employees from any claim, action or proceeding against the Commission or its agents, officers, and employees; including all costs, attorney's fees, expenses and liabilities incurred in the defense of such claim, action, or proceeding to attack, set aside, or void the approval or determinations of this Commission concerning this change of organization. The Plumas Local Agency Formation Commission shall promptly notify the applicant of any such claim, action, or proceeding and be entitled to representation by counsel of its choosing.
- 4.7. The Executive Officer is directed to record a Certificate of Completion for this proposal upon expiration of the 30-day reconsideration period.
- 4.8. Completion of proceedings shall be concluded within one year after adoption of this resolution. If the proceedings are not concluded within one year after passage of this resolution, all proceedings shall be terminated unless a request for an extension is submitted to LAFCo prior to the expiration date.

The foregoing resolution was duly passed by the Plumas Local Agency Formation Commission at a regular meeting held on August 14, 2017, by the following roll call vote:

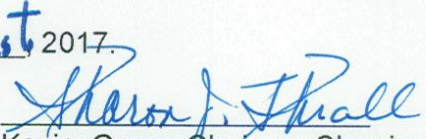
Ayes: Greening, Sanchez, Cooley, Powers & Thrall

Noes:

Abstentions:

Absent:

Signed and approved by me after its passage this 14 day of August, 2017.


Kevin Goss, Chair or Sherrie Thrall,
Vice Chair - Plumas LAFCo

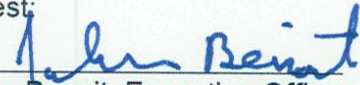
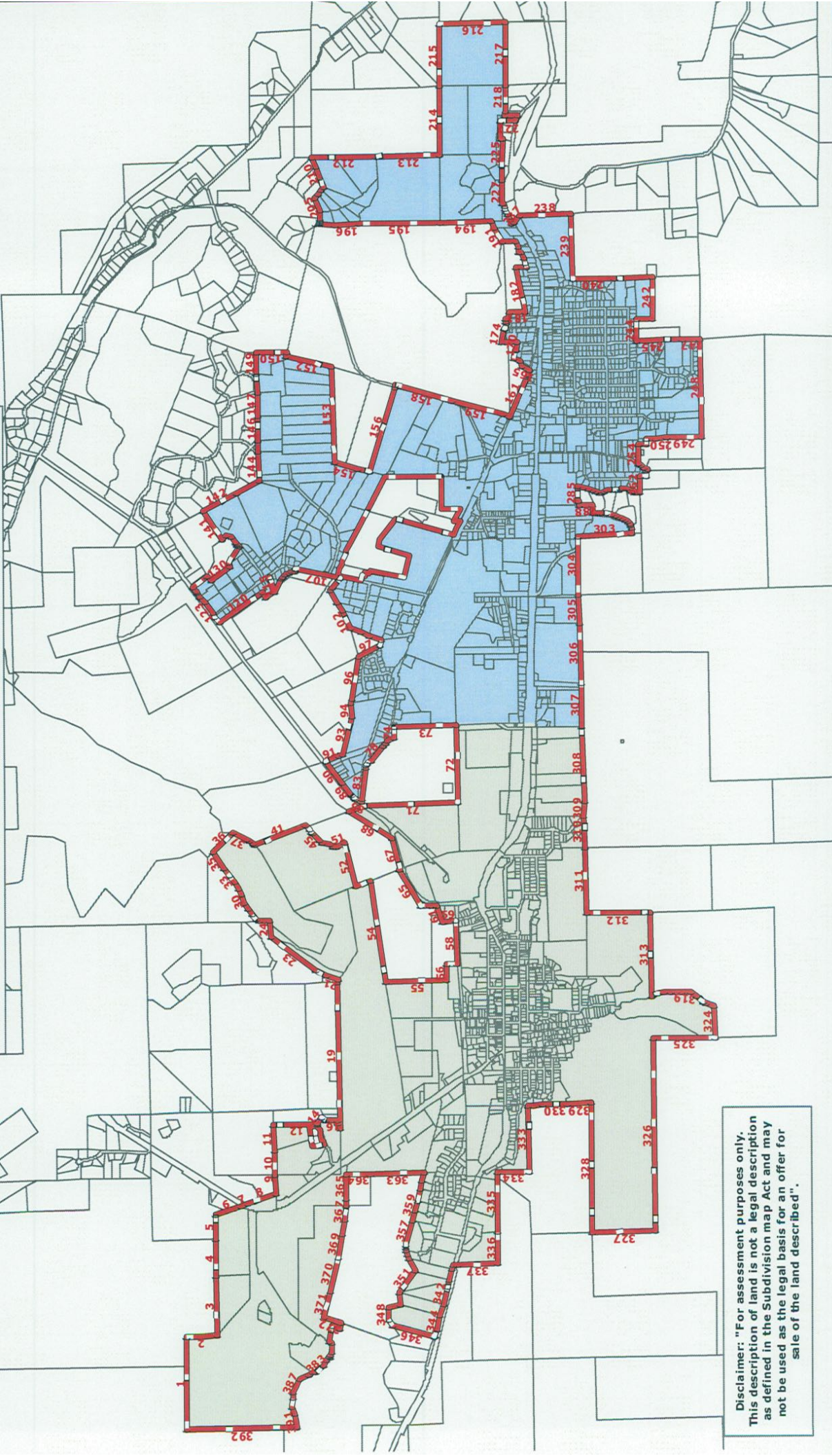


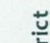
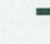

Attest:

John Benoit, Executive Officer

Exhibit A-1
Plumas LAFCO File 2017-0002
Formation of the American Valley Community Services District



Disclaimer: "For assessment purposes only. This description of land is not a legal description as defined in the Subdivision map Act and may not be used as the legal basis for an offer for sale of the land described".

Legend

-  American Valley Community Services District
-  East Quincy Services District
-  Zone A - Services District
-  Zone B - Services District
-  Plumas County Assessors Parcels

0 1,250 2,500 5,000 Feet

0 0.25 0.5 1 Miles

Exhibit B-1

LAFCO File 2017 - 0002

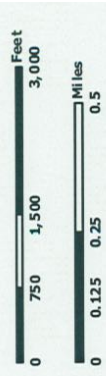
Formation of the East Quincy Community Services ZONE "A"

Geographic Description

Legend

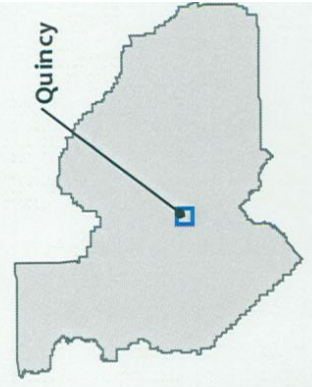
East Quincy Community Services ZONE "A"

Plumas County Assessors Parcels

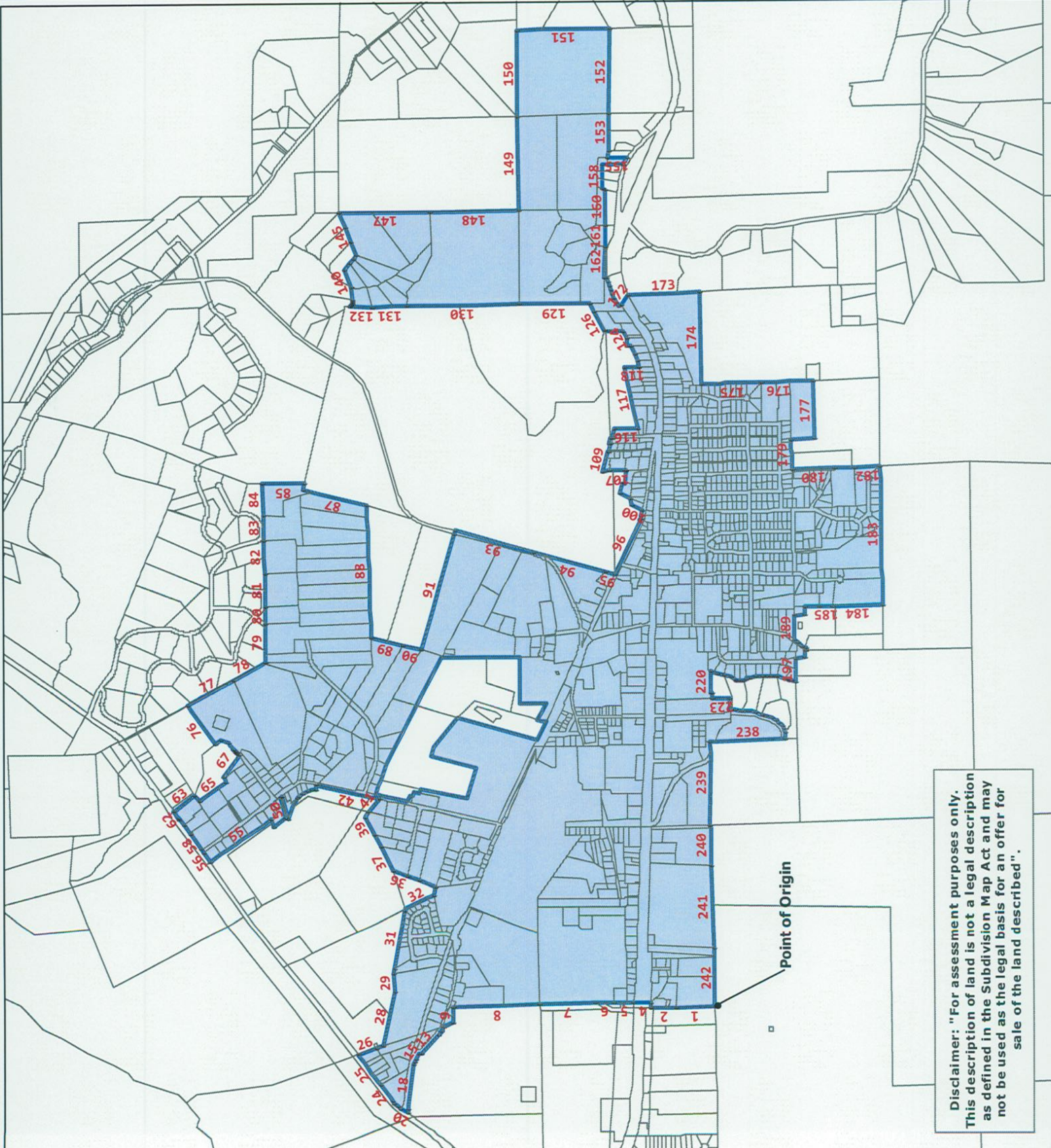


Compiled by Jim Crane Consulting
7/ June 2011

Plumas County



Location Map
Not To Scale



Point of Origin

Disclaimer: "For assessment purposes only. This description of land is not a legal description as defined in the Subdivision Map Act and may not be used as the legal basis for an offer for sale of the land described".

Exhibit C-1

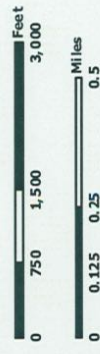
LAFCO File 2017-0002
Formation of the
Quincy Community
Services ZONE "A"

Geographic Description

Legend

Quincy Community
Services ZONE "B"

Plumas County
Assessors Parcels

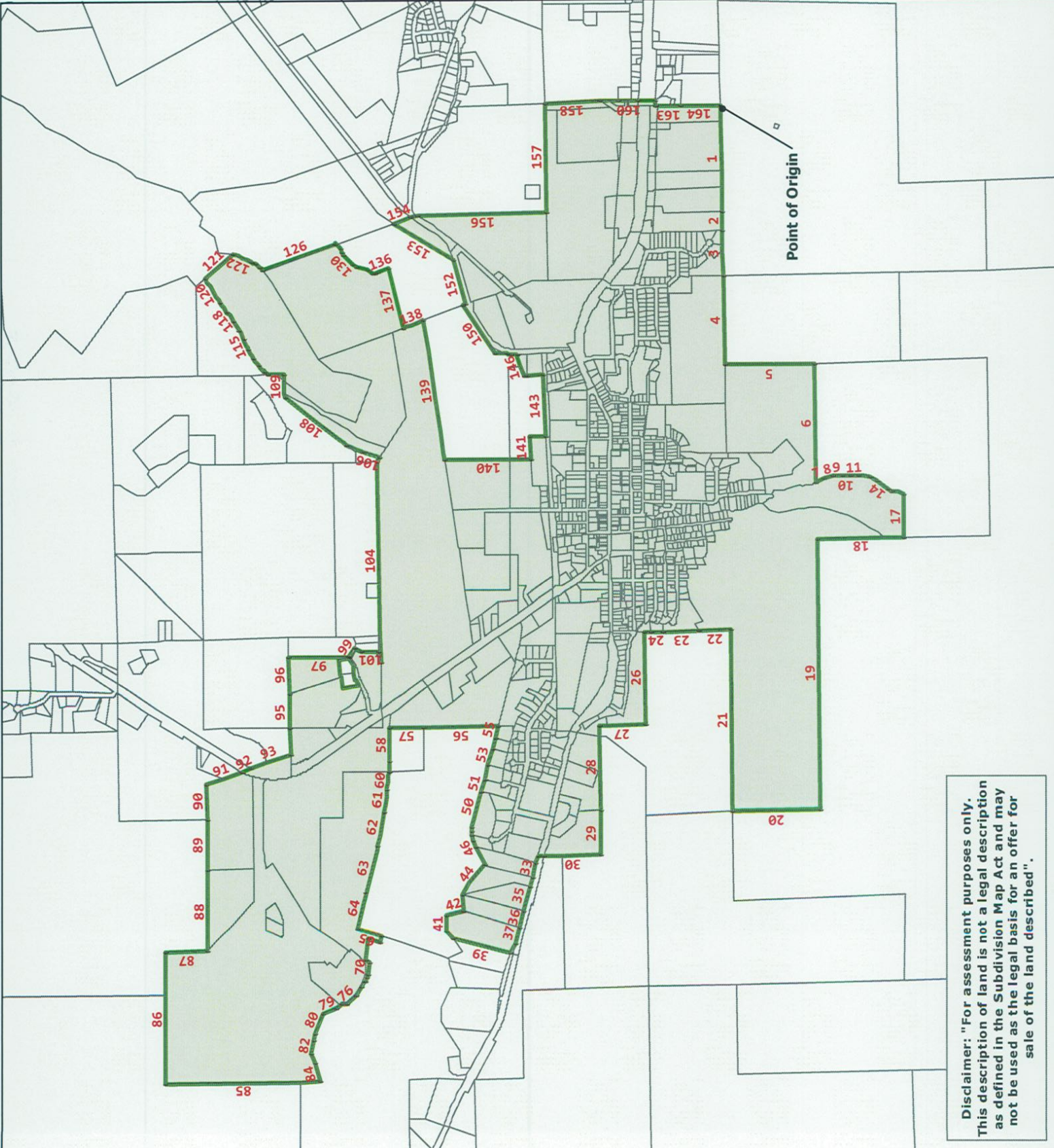


Compiled by Jim Crane Consulting
27 June 2011

Plumas County



Location Map
Not To Scale



Disclaimer: "For assessment purposes only. This description of land is not a legal description as defined in the Subdivision Map Act and may not be used as the legal basis for an offer for sale of the land described".

Exhibit A-2

American Valley Community Services District

**File 2017-0002 Consolidation of the Quincy Community &
East Quincy Community Services District**

Geographic Description

All that certain property, situated in portions of Sections 9, 10, 11, 12, 13, 14, 15, 22, 23 and 24, Township 24 North, Range 9 East, and in portions of Sections 7, 16, 17, 18, 19 and 20, Township 24 North, Range 10 East, Mount Diablo Base Meridian, in the County of Plumas, State of California, described as follows:

Beginning at the southeast corner of county parcel APN005230USA, and the northwest corner of county parcel APN115350001 (also being the existing Quincy Community Services District boundary), the junction of which is referred to hereafter as data point 1 (DP1).

Traverse	Direction	Distance (feet)	Traverse	Direction	Distance (feet)
1	S 89-55-41.4899 E	1953.2	32	N 59-19-21.6250 E	166.09
2	S 1-32-2.4793 E	642.02	33	N 51-20-23.3444 E	170.53
3	N 89-28-53.5859 E	1233.83	34	N 52-28-52.2718 E	170.94
4	N 89-29-15.9883 E	754.33	35	N 58-37-17.7017 E	415.11
5	N 89-4-54.1581 E	504.99	36	S 42-15-26.5796 E	561.07
6	S 17-41-25.1005 E	563.69	37	S 23-40-39.3869 W	306.12
7	S 24-40-0.1260 E	161.74	38	S 26-24-1.6968 W	72.3
8	S 19-17-31.0519 E	623.89	39	S 36-56-25.6462 W	89.84
9	N 87-43-1.4077 E	386.38	40	S 49-6-55.3434 W	56.18
10	N 89-5-21.7755 E	506.92	41	S 19-50-34.3314 E	1153.69
11	N 89-4-0.0551 E	538.02	42	S 42-50-54.6272 W	112.1
12	S 0-11-1.9891 E	922.57	43	S 62-17-13.0096 W	58.12
13	N 83-13-45.6172 E	20	44	S 56-43-37.0031 W	42.43
14	S 53-19-8.7324 E	139.03	45	S 47-2-17.1764 W	206.1
15	S 29-0-53.1731 W	106.62	46	S 35-13-32.1300 W	62.32
16	S 1-11-59.8490 E	262.34	47	S 13-48-0.8253 W	177.1
17	S 89-35-29.6787 W	49.21	48	S 42-0-17.3049 W	93.02
18	S 73-46-46.2966 W	123	49	S 0-38-53.1293 W	37.5
19	N 88-53-0.3206 E	2999.88	50	S 27-31-18.4377 E	54.18
20	S 54-59-24.2099 E	69.92	51	S 21-4-1.7902 E	167.44
21	N 17-21-17.1150 E	272.93	52	S 75-44-34.3350 W	925.32
22	N 25-34-20.0641 E	252.9	53	S 20-10-47.1387 E	320.12
23	N 37-20-46.3910 E	1181.3	54	S 81-11-42.3121 W	2106.6
24	N 89-14-14.2751 E	334.55	55	S 0-41-8.7701 E	1286.84
25	N 0-54-47.3211 W	239.33	56	N 86-56-11.0860 E	339.79
26	N 38-29-15.5967 E	74.61	57	S 0-37-51.6796 W	244.12
27	N 44-49-28.1895 E	133.51	58	N 87-4-59.9460 E	909.08
28	N 54-7-5.3033 E	140.45	59	N 3-15-38.2284 W	240
29	N 60-51-6.2968 E	144.15	60	N 3-9-48.6131 W	41.85
30	N 67-0-40.7584 E	173.58	61	N 72-53-30.8330 E	338.76
31	N 63-51-11.1243 E	148.34	62	N 1-44-5.8845 E	97.74

Traverse	Direction	Distance (feet)
63	N 10-58-3.4510 E	48.11
64	N 0-34-1.7020 E	189.13
65	N 56-46-58.8584 E	868.8
66	S 20-21-13.1173 E	42.05
67	N 74-47-31.6120 E	679.48
68	N 31-30-58.5535 E	1057.22
69	S 20-18-30.0783 E	269.8
70	S 14-53-13.2291 E	105.81
71	S 1-6-36.1432 E	1950.44
72	N 88-43-20.7788 E	1626.3
73	N 1-45-43.0046 W	1307.64
74	N 89-10-35.3926 W	224.97
75	N 17-20-33.4992 W	151.1
76	N 65-37-27.3733 W	78.62
77	N 53-44-21.2116 W	60.48
78	N 47-57-49.1797 W	393.76
79	N 3-14-39.4934 W	42.74
80	N 55-41-21.6013 W	83.09
81	N 62-14-28.4879 W	42.05
82	N 74-44-42.2517 W	44.66
83	N 82-33-40.7888 W	665.62
84	S 79-12-48.9519 W	61.38
85	N 23-22-5.6551 E	142.96
86	N 40-31-57.8199 E	53.75
87	N 45-7-29.0679 E	63.57
88	N 49-45-51.3931 E	53.36
89	N 52-59-42.3940 E	296.85
90	N 53-16-15.6617 E	567.24
91	S 18-55-0.6746 E	292.74
92	S 18-23-18.2993 E	106.23
93	S 77-21-18.5029 E	817.6
94	N 87-42-33.6329 E	282.99
95	S 80-4-40.4186 E	79.57
96	S 80-4-38.0657 E	897
97	S 26-32-25.0137 E	507.68
98	S 77-11-45.1612 E	110.73
99	N 22-6-52.4094 E	265.58
100	N 22-1-45.7733 E	197.49
101	N 20-23-21.1544 E	226.86
102	N 61-40-22.3325 E	410.8
103	N 62-3-8.5027 E	200.66
104	N 61-52-55.1277 E	297.84
105	S 50-1-31.3868 E	79.32
106	S 48-54-7.5655 E	249.99
107	N 12-31-17.1547 E	978.83
108	N 89-29-32.8238 W	69.07
109	N 2-58-2.8969 E	52.64
110	N 17-9-32.3640 W	75.34
111	N 34-59-19.1833 W	80.25

Traverse	Direction	Distance (feet)
112	N 34-59-17.2559 W	75.79
113	N 34-59-42.6505 W	35.48
114	N 62-43-32.4700 W	320.61
115	N 72-22-8.4158 E	331.35
116	N 34-59-26.1250 W	22.01
117	S 72-22-8.6722 W	313.71
118	N 35-23-42.1140 W	225
119	N 72-29-27.5824 E	125
120	N 34-23-57.7062 W	1126.44
121	N 55-32-34.7527 E	165.97
122	N 60-31-24.0711 E	70.75
123	N 52-7-43.4204 E	286.55
124	N 53-53-24.8032 E	161.54
125	N 54-13-19.4822 E	118.08
126	N 38-59-23.9544 W	9.71
127	N 54-25-48.7035 E	126.16
128	S 35-15-41.5431 E	393.4
129	S 53-17-46.7864 W	103.03
130	S 35-5-18.1496 E	511.52
131	N 55-52-18.2065 E	94.5
132	S 53-57-12.7489 E	399.7
133	N 53-2-36.8891 E	41.02
134	N 46-54-39.6349 E	10.05
135	N 42-51-56.4872 E	16.74
136	N 40-44-26.9179 E	15.22
137	N 45-54-10.9027 E	30.63
138	N 54-8-11.7293 E	140.79
139	N 14-7-58.9256 E	115.16
140	N 36-8-34.4918 W	99.56
141	N 54-32-28.4088 E	707.84
142	S 27-44-57.3360 E	788.59
143	S 28-20-34.6784 E	545.45
144	N 89-48-39.4988 E	584.22
145	N 89-40-46.1382 E	251.95
146	N 88-43-50.2738 E	485.6
147	N 88-30-32.5803 E	506.4
148	N 88-49-16.5479 E	369.4
149	N 88-49-52.9685 E	479.14
150	S 0-12-4.3143 W	643.52
151	N 77-50-28.5123 W	93.78
152	S 14-13-32.8153 W	989.61
153	S 88-21-18.1902 W	1969.99
154	S 14-47-46.7699 W	505.89
155	S 14-47-47.0463 W	270.98
156	S 73-29-22.1652 E	1812.67
157	S 75-2-39.6929 E	49.49
158	S 15-39-7.2793 W	1235.49
159	S 15-27-30.0983 W	1117.68
160	S 15-46-28.8721 W	135.71

Traverse	Direction	Distance (feet)
161	S 64-2-21.7853 E	895.5
162	S 73-18-4.6607 E	34.14
163	S 77-28-10.8504 E	36.18
164	S 80-51-33.1352 E	85.52
165	N 21-43-13.7310 E	178.19
166	N 83-24-43.2313 E	112.74
167	N 24-38-30.7887 E	171.82
168	S 73-51-38.7830 E	161.49
169	S 0-23-56.3842 W	26.18
170	S 81-7-33.0662 E	192.78
171	N 1-56-44.0746 W	31.63
172	N 1-56-42.4255 W	231.39
173	N 1-56-44.7671 W	96.7
174	S 77-16-12.2627 E	293.48
175	S 3-58-7.9864 E	33.08
176	S 79-28-46.1725 E	119.47
177	N 21-48-35.7068 E	30.39
178	S 77-40-52.5676 E	69.86
179	S 0-34-34.5939 W	50
180	S 79-54-12.1459 E	141.96
181	S 1-37-16.5918 E	345.95
182	N 78-19-10.2890 E	937.03
183	S 0-50-41.3986 E	222.98
184	N 72-30-9.6690 E	105.57
185	N 72-38-36.2190 E	105.44
186	N 66-29-41.0278 E	131.53
187	N 1-17-13.7412 W	60.41
188	S 89-58-10.3039 E	107.96
189	N 62-51-22.4980 E	132.55
190	N 0-15-31.8899 E	293.22
191	N 60-31-18.5200 E	335.91
192	S 0-44-16.4426 E	15.85
193	N 60-12-39.8973 E	136.89
194	N 0-35-21.5369 W	1064.39
195	N 0-35-21.5703 W	1703.6
196	N 0-35-21.2164 W	504.44
197	N 1-40-1.0147 E	346.891
198	S 46-18-38.2979 E	18.275
199	S 52-13-23.1574 E	14.503
200	S 62-54-22.1532 E	15.991
201	S 80-39-46.7182 E	20.58
202	S 89-28-23.0162 E	23.13
203	N 86-31-14.1332 E	26.39
204	N 88-34-41.5235 E	171.33
205	N 66-15-26.9552 E	288.13
206	S 47-35-22.2393 E	134.75
207	S 47-54-25.7882 E	82.50
208	S 48-2-17.5847 E	77.87
209	N 67-26-20.2429 E	222.54

Traverse	Direction	Distance (feet)
210	N 67-38-10.6222 E	235.93
211	N 67-40-47.7518 E	227.45
212	S 0-31-1.5990 E	1368.39
213	S 0-30-50.8983 E	1334.87
214	N 89-49-26.5777 E	1410.31
215	N 89-49-26.2204 E	1278.03
216	S 0-55-43.4210 E	1390.96
217	N 89-45-48.7206 W	1277.56
218	N 88-57-41.1618 W	548.41
219	N 83-6-0.9263 W	103.22
220	S 0-22-19.3748 E	287.08
221	N 64-3-27.7362 W	123.04
222	N 0-0-0.0000 E	313.98
223	N 88-33-54.6147 W	357.04
224	S 11-49-34.6165 W	54.39
225	N 88-48-0.4117 W	540.09
226	N 88-47-59.9947 W	315.13
227	N 88-48-0.9271 W	464.15
228	S 1-59-14.6016 E	44.18
229	S 79-57-0.7111 W	75.83
230	S 72-49-29.3512 W	56.51
231	S 70-56-30.2603 W	54.87
232	S 69-44-2.5496 W	67.72
233	S 64-13-54.8949 W	63
234	S 63-26-2.7878 W	63.84
235	S 59-16-3.3542 W	86.4
236	S 28-58-3.2077 E	40.08
237	S 50-11-5.0136 E	182.51
238	S 2-24-55.5914 E	1079.96
239	S 89-10-54.2071 W	1376.51
240	S 1-20-30.5915 E	893.43
241	S 1-13-41.5862 E	778.6
242	S 88-44-43.4535 W	870
243	N 1-17-6.1692 W	350
244	S 88-42-53.8373 W	451.42
245	S 1-44-17.2378 E	638.84
246	S 1-44-17.6097 E	313.4
247	S 1-44-16.9481 E	381
248	S 89-13-48.7422 W	2047.28
249	N 1-22-18.0697 W	751.65
250	N 0-29-18.2830 W	212
251	N 0-29-17.0454 W	206.69
252	S 89-19-15.2730 W	134.09
253	N 0-40-34.3388 W	161.15
254	S 89-40-47.6068 W	379.34
255	S 38-6-33.7975 W	61.77
256	S 36-55-56.6316 W	78.76
257	S 26-34-2.0261 W	69.02
258	N 75-6-13.4974 W	43.19

Traverse	Direction	Distance (feet)
259	N 28-14-51.7413 E	21
260	S 88-31-21.8857 W	112.35
261	N 1-28-40.6824 W	140
262	S 88-31-22.9762 W	338.78
263	N 2-27-39.5477 E	54.66
264	N 11-35-28.4455 E	23.09
265	N 11-35-29.4241 E	25.25
266	N 24-51-50.3168 E	22.75
267	N 22-38-11.6398 E	47.45
268	N 17-24-11.7337 E	119.49
269	N 5-12-24.6857 E	48.8
270	N 8-44-35.2788 W	31.94
271	N 4-43-24.0447 W	31.47
272	N 4-43-31.8583 W	42.73
273	N 0-2-6.8622 E	65.42
274	N 0-38-5.1096 W	106.23
275	N 6-54-42.2583 W	74.88
276	N 18-23-57.0427 W	65.6
277	N 27-54-32.2033 W	66.3
278	N 1-54-26.3972 E	33.85
279	N 10-3-36.0451 E	63.06
280	N 25-24-27.2902 E	31.55
281	N 25-24-27.8109 E	75.99
282	N 17-40-54.0870 E	85.8
283	N 15-51-12.3804 E	107.21
284	N 15-26-57.1610 E	115.82
285	S 89-35-1.8891 W	325.62
286	S 4-45-51.1571 E	24.55
287	S 88-45-31.2238 W	78.33
288	S 1-57-46.2192 E	264.43
289	S 88-51-14.5170 W	173.61
290	S 2-28-59.6163 W	76.67
291	S 3-35-47.6658 W	92.73
292	S 3-35-47.2380 W	109.21
293	S 7-24-33.4547 W	112.82
294	S 26-7-54.0269 W	104.47
295	S 16-53-51.7298 W	54.11
296	S 16-53-52.6967 W	88.45
297	S 25-1-25.7473 W	69.55
298	S 35-6-18.9287 W	68.67
299	S 47-27-25.1406 W	69.7
300	S 60-25-25.1269 W	33.83
301	S 66-24-51.3312 W	63.71
302	S 85-22-19.9324 W	112.97
303	N 2-5-36.4470 W	1139.04
304	N 89-59-19.2189 W	1225.2
305	S 88-47-23.1612 W	602.44
306	S 88-41-9.3714 W	1233.84
307	S 88-53-37.2626 W	904.39

Traverse	Direction	Distance (feet)
308	S 88-45-25.4171 W	1579.49
309	N 89-34-41.3133 W	289.27
310	S 88-33-59.8637 W	667.42
311	S 89-16-3.7833 W	1336.57
312	S 0-4-12.6900 E	1344.79
313	S 89-21-23.8814 W	1751.98
314	S 24-9-51.9765 E	139.67
315	S 13-10-20.6957 E	140.64
316	S 3-59-27.5746 E	125.59
317	S 2-36-8.7651 W	128.33
318	S 3-24-59.4753 E	116.98
319	S 6-48-29.2525 W	181.69
320	S 30-31-48.3741 W	131.91
321	S 38-31-0.7758 W	182.46
322	S 23-44-59.9302 W	79.58
323	S 17-56-23.5625 W	176.44
324	S 88-49-9.7345 W	646.61
325	N 0-47-46.8945 W	1303.97
326	S 89-29-14.0645 W	3985.92
327	N 1-24-27.1620 W	1313.24
328	N 89-34-16.4130 E	2682.99
329	N 1-32-59.0886 W	494.38
330	N 1-46-4.5136 W	523.54
331	N 1-17-11.1872 W	198.34
332	N 1-17-10.7897 W	95.9
333	S 89-19-2.4724 W	1365.93
334	N 1-12-33.3043 W	688.26
335	S 89-39-56.4721 W	1240.01
336	S 89-39-54.7689 W	661.95
337	N 1-18-58.8817 W	845.1
338	N 0-47-31.6087 W	94.13
339	N 73-45-24.9612 W	94.04
340	N 74-51-43.1717 W	224.77
341	N 76-3-43.0990 W	142.97
342	N 76-14-14.2999 W	371.94
343	N 75-42-53.8384 W	249.95
344	N 76-18-41.2784 W	283.55
345	N 61-56-15.5244 W	152.37
346	N 14-5-4.6259 E	897.15
347	N 52-48-47.7628 E	146.52
348	N 89-8-26.7832 E	239.51
349	S 15-40-29.6881 E	265.92
350	N 83-51-15.0957 E	243.99
351	S 53-0-37.8338 E	578.38
352	N 61-49-7.0600 E	296.17
353	N 61-49-6.9726 E	94.55
354	N 79-21-40.7799 E	82.92
355	N 83-31-47.1887 E	59.47
356	S 84-55-13.1792 E	65.83

Traverse	Direction	Distance (feet)
357	S 74-16-25.2880 E	527.29
358	S 75-4-51.1925 E	185.93
359	S 75-4-51.8499 E	218.89
360	S 75-4-51.0901 E	259.32
361	S 75-4-52.4045 E	162.5
362	S 75-4-51.5643 E	184.51
363	N 0-49-37.3497 W	1136.09
364	N 0-49-37.0379 W	500.65
365	N 88-27-32.2675 W	505.54
366	N 88-27-32.6592 W	154.07
367	N 83-56-3.3431 W	263.68
368	N 83-14-31.6571 W	313.47
369	N 78-24-21.5468 W	514.48
370	N 75-52-51.7733 W	729.35
371	N 75-52-51.7607 W	545.34
372	S 18-44-4.2215 W	392.78
373	N 80-48-24.1787 W	101.42
374	N 18-44-3.0574 E	190.04
375	N 80-48-28.4346 W	323.03
376	S 36-5-15.6309 W	65.73
377	N 85-24-7.6521 W	179.59
378	N 78-17-29.1596 W	54.7
379	N 70-29-20.6981 W	57.52
380	N 26-55-58.8351 E	26
381	N 63-1-53.9650 W	99.99
382	N 58-40-34.7527 W	133.42
383	N 40-40-30.6018 W	195.04
384	N 0-0-28.7378 E	78.21
385	N 40-18-37.8119 W	98.42
386	N 20-11-12.7479 W	216.54
387	N 66-20-37.2363 W	323.51
388	N 85-16-15.0471 W	114.37
389	N 79-17-33.3728 W	195.54
390	S 67-56-12.5035 W	147.35
391	S 76-0-47.1044 W	298.58
392	N 0-41-53.2788 W	2332.01

Disclaimer: "For assessment purposes only. This description of land is not a legal description as defined in the Subdivision Map Act and may not be used as the legal basis for an offer for sale of the land described".

Exhibit B-2

LAFCO File 2017-0002
Formation of the East Quincy Community Services District

BENEFIT ZONE A - Description

All that certain property, situated in portions of Sections 12, 13, and 24, Township 24 North, Range 9 East, and in portions of Sections 7, 16, 17, 18, 19 and 20, Township 24 North, Range 10 East, Mount Diablo Base Meridian, in the County of Plumas, State of California, described as follows:

Beginning at the southeast corner of county parcel APN116300013, which is referred to hereafter as data point 1 (DP1).

Course	Direction	Distance (feet)	Course	Direction	Distance (feet)
1	N 0-23-34 W	585.58	32	S 26-32-25.0137 E	507.68
2	N 0-23-33 W	378.57	33	S 77-11-45.1612 E	110.73
3	S 88-6-3 E	78.37	34	N 22-6-52.4094 E	265.58
4	N 0-15-17 W	261.5	35	N 22-1-45.7733 E	197.49
5	N 0-4-20 W	306.7	36	N 20-23-21.1544 E	226.86
6	N 0-4-21 W	281.85	37	N 61-40-22.3325 E	410.8
7	N 1-42-29 W	830.37	38	N 62-3-8.5027 E	200.66
8	N 1-45-43.0046 W	1307.64	39	N 61-52-55.1277 E	297.84
9	N 89-10-35.3926 W	224.97	40	S 50-1-31.3868 E	79.32
10	N 17-20-33.4992 W	151.1	41	S 48-54-7.5655 E	249.99
11	N 65-37-27.3733 W	78.62	42	N 12-31-17.1547 E	978.83
12	N 53-44-21.2116 W	60.48	43	N 89-29-32.8238 W	69.07
13	N 47-57-49.1797 W	393.76	44	N 2-58-2.8969 E	52.64
14	N 3-14-39.4934 W	42.74	45	N 17-9-32.3640 W	75.34
15	N 55-41-21.6013 W	83.09	46	N 34-59-19.1833 W	80.25
16	N 62-14-28.4879 W	42.05	47	N 34-59-17.2559 W	75.79
17	N 74-44-42.2517 W	44.66	48	N 34-59-42.6505 W	35.48
18	N 82-33-40.7888 W	665.62	49	N 62-43-32.4700 W	320.61
19	S 79-12-48.9519 W	61.38	50	N 72-22-8.4158 E	331.35
20	N 23-22-5.6551 E	142.96	51	N 34-59-26.1250 W	22.01
21	N 40-31-57.8199 E	53.75	52	S 72-22-8.6722 W	313.71
22	N 45-7-29.0679 E	63.57	53	N 35-23-42.1140 W	225
23	N 49-45-51.3931 E	53.36	54	N 72-29-27.5824 E	125
24	N 52-59-42.3940 E	296.85	55	N 34-23-57.7062 W	1126.44
25	N 53-16-15.6617 E	567.24	56	N 55-32-34.7527 E	165.97
26	S 18-55-0.6746 E	292.74	57	N 60-31-24.0711 E	70.75
27	S 18-23-18.2993 E	106.23	58	N 52-7-43.4204 E	286.55
28	S 77-21-18.5029 E	817.6	59	N 53-53-24.8032 E	161.54
29	N 87-42-33.6329 E	282.99	60	N 54-13-19.4822 E	118.08
30	S 80-4-40.4186 E	79.57	61	N 38-59-23.9544 W	9.71
31	S 80-4-38.0657 E	897	62	N 54-25-48.7035 E	126.16

Course	Direction	Distance (feet)	Course	Direction	Distance (feet)
63	S 35-15-41.5431 E	393.4	112	N 21-48-35.7068 E	30.39
64	S 53-17-46.7864 W	103.03	113	S 77-40-52.5676 E	69.86
65	S 35-5-18.1496 E	511.52	114	S 0-34-34.5939 W	50
66	N 55-52-18.2065 E	94.5	115	S 79-54-12.1459 E	141.96
67	S 53-57-12.7489 E	399.7	116	S 1-37-16.5918 E	345.95
68	N 53-2-36.8891 E	41.02	117	N 78-19-10.2890 E	937.03
69	N 46-54-39.6349 E	10.05	118	S 0-50-41.3986 E	222.98
70	N 42-51-56.4872 E	16.74	119	N 72-30-9.6690 E	105.57
71	N 40-44-26.9179 E	15.22	120	N 72-38-36.2190 E	105.44
72	N 45-54-10.9027 E	30.63	121	N 66-29-41.0278 E	131.53
73	N 54-8-11.7293 E	140.79	122	N 1-17-13.7412 W	60.41
74	N 14-7-58.9256 E	115.16	123	S 89-58-10.3039 E	107.96
75	N 36-8-34.4918 W	99.56	124	N 62-51-22.4980 E	132.55
76	N 54-32-28.4088 E	707.84	125	N 0-15-31.8899 E	293.22
77	S 27-44-57.3360 E	788.59	126	N 60-31-18.5200 E	335.91
78	S 28-20-34.6784 E	545.45	127	S 0-44-16.4426 E	15.85
79	N 89-48-39.4988 E	584.22	128	N 60-12-39.8973 E	136.89
80	N 89-40-46.1382 E	251.95	129	N 0-35-21.5369 W	1064.39
81	N 88-43-50.2738 E	485.6	130	N 0-35-21.5703 W	1703.6
82	N 88-30-32.5803 E	506.4	131	N 0-35-21.2164 W	504.44
83	N 88-49-16.5479 E	369.4	132	N 1-40-1.0147 E	346.891
84	N 88-49-52.9685 E	479.14	133	S 46-18-38.2979 E	18.275
85	S 0-12-4.3143 W	643.52	134	S 52-13-23.1574 E	14.503
86	N 77-50-28.5123 W	93.78	135	S 62-54-22.1532 E	15.991
87	S 14-13-32.8153 W	989.61	136	S 80-39-46.7182 E	20.58
88	S 88-21-18.1902 W	1969.99	137	S 89-28-23.0162 E	23.13
89	S 14-47-46.7699 W	505.89	138	N 86-31-14.1332 E	26.39
90	S 14-47-47.0463 W	270.98	139	N 88-34-41.5235 E	171.33
91	S 73-29-22.1652 E	1812.67	140	N 66-15-26.9552 E	288.13
92	S 75-2-39.6929 E	49.49	141	S 47-35-22.2393 E	134.75
93	S 15-39-7.2793 W	1235.49	142	S 47-54-25.7882 E	82.50
94	S 15-27-30.0983 W	1117.68	143	S 48-2-17.5847 E	77.87
95	S 15-46-28.8721 W	135.71	144	N 67-26-20.2429 E	222.54
96	S 64-2-21.7853 E	895.5	145	N 67-38-10.6222 E	235.93
97	S 73-18-4.6607 E	34.14	146	N 67-40-47.7518 E	227.45
98	S 77-28-10.8504 E	36.18	147	S 0-31-1.6208 E	1368.39
99	S 80-51-33.1352 E	85.52	148	S 0-30-50.8983 E	1334.87
100	N 21-43-13.7310 E	178.19	149	N 89-49-26.5777 E	1410.31
101	N 83-24-43.2313 E	112.74	150	N 89-49-26.2204 E	1278.03
102	N 24-38-30.7887 E	171.82	151	S 0-55-43.4210 E	1390.96
103	S 73-51-38.7830 E	161.49	152	N 89-45-48.7206 W	1277.56
104	S 0-23-56.3842 W	26.18	153	N 88-57-41.1618 W	548.41
105	S 81-7-33.0662 E	192.78	154	N 83-6-0.9263 W	103.22
106	N 1-56-44.0746 W	31.63	155	S 0-22-19.3748 E	287.08
107	N 1-56-42.4255 W	231.39	156	N 64-3-27.7362 W	123.04
108	N 1-56-44.7671 W	96.7	157	N 0-0-0.0000 E	313.98
109	S 77-16-12.2627 E	293.48	158	N 88-33-54.6147 W	357.04
110	S 3-58-7.9864 E	33.08	159	S 11-49-34.6165 W	54.39
111	S 79-28-46.1725 E	119.47	160	N 88-48-0.4117 W	540.09

Course	Direction	Distance (feet)	Course	Direction	Distance (feet)
161	N 88-47-59.9947 W	315.13	202	N 22-38-11.6398 E	47.45
162	N 88-48-0.9271 W	464.15	203	N 17-24-11.7337 E	119.49
163	S 1-59-14.6016 E	44.18	204	N 5-12-24.6857 E	48.8
164	S 79-57-0.7111 W	75.83	205	N 8-44-35.2788 W	31.94
165	S 72-49-29.3512 W	56.51	206	N 4-43-24.0447 W	31.47
166	S 70-56-30.2603 W	54.87	207	N 4-43-31.8583 W	42.73
167	S 69-44-2.5496 W	67.72	208	N 0-2-6.8622 E	65.42
168	S 64-13-54.8949 W	63	209	N 0-38-5.1096 W	106.23
169	S 63-26-2.7878 W	63.84	210	N 6-54-42.2583 W	74.88
170	S 59-16-3.3542 W	86.4	211	N 18-23-57.0427 W	65.6
171	S 28-58-3.2077 E	40.08	212	N 27-54-32.2033 W	66.3
172	S 50-11-5.0136 E	182.51	213	N 1-54-26.3972 E	33.85
173	S 2-24-55.5914 E	1079.96	214	N 10-3-36.0451 E	63.06
174	S 89-10-54.2071 W	1376.51	215	N 25-24-27.2902 E	31.55
175	S 1-20-30.5915 E	893.43	216	N 25-24-27.8109 E	75.99
176	S 1-13-41.5862 E	778.6	217	N 17-40-54.0870 E	85.8
177	S 88-44-43.4535 W	870	218	N 15-51-12.3804 E	107.21
178	N 1-17-6.1692 W	350	219	N 15-26-57.1610 E	115.82
179	S 88-42-53.8373 W	451.42	220	S 89-35-1.8891 W	325.62
180	S 1-44-17.2378 E	638.84	221	S 4-45-51.1571 E	24.55
181	S 1-44-17.6097 E	313.4	222	S 88-45-31.2238 W	78.33
182	S 1-44-16.9481 E	381	223	S 1-57-46.2192 E	264.43
183	S 89-13-48.7422 W	2047.28	224	S 88-51-14.5170 W	173.61
184	N 1-22-18.0697 W	751.65	225	S 2-28-59.6163 W	76.67
185	N 0-29-18.2830 W	212	226	S 3-35-47.6658 W	92.73
186	N 0-29-17.0454 W	206.69	227	S 3-35-47.2380 W	109.21
187	S 89-19-15.2730 W	134.09	228	S 7-24-33.4547 W	112.82
188	N 0-40-34.3388 W	161.15	229	S 26-7-54.0269 W	104.47
189	S 89-40-47.6068 W	379.34	230	S 16-53-51.7298 W	54.11
190	S 38-6-33.7975 W	61.77	231	S 16-53-52.6967 W	88.45
191	S 36-55-56.6316 W	78.76	232	S 25-1-25.7473 W	69.55
192	S 26-34-2.0261 W	69.02	233	S 35-6-18.9287 W	68.67
193	N 75-6-13.4974 W	43.19	234	S 47-27-25.1406 W	69.7
194	N 28-14-51.7413 E	21	235	S 60-25-25.1269 W	33.83
195	S 88-31-21.8857 W	112.35	236	S 66-24-51.3312 W	63.71
196	N 1-28-40.6824 W	140	237	S 85-22-19.9324 W	112.97
197	S 88-31-22.9762 W	338.78	238	N 2-5-36.4470 W	1139.04
198	N 2-27-39.5477 E	54.66	239	N 89-59-19.2189 W	1225.2
199	N 11-35-28.4455 E	23.09	240	S 88-47-23.1612 W	602.44
200	N 11-35-29.4241 E	25.25	241	S 88-41-9.3714 W	1233.84
201	N 24-51-50.3168 E	22.75	242	S 88-53-37.2626 W	904.39

Disclaimer: "For assessment purposes only. This description of land is not a legal description as defined in the Subdivision Map Act and may not be used as the legal basis for an offer for sale of the land described".

Exhibit C-2

LAFCO File 2017-0002
Formation of the Quincy Community Services District

BENEFIT ZONE B Description

All that certain property, situated in portions of Sections 9, 10, 11, 12, 13, 14, 15, 16, 22, 23 and 24, Township 24 North, Range 9 East, Mount Diablo Base Meridian, in the County of Plumas, State of California, described as follows:

Beginning at the southeast corner of county parcel APN116300013, which is referred to hereafter as data point 1 (DP1).

Course	Direction	Distance (feet)	Course	Direction	Distance (feet)
1	S 88-45-25.4171 W	1579.49	32	N 73-45-24.9612 W	94.04
2	N 89-34-41.3133 W	289.27	33	N 74-51-43.1717 W	224.77
3	S 88-33-59.8637 W	667.42	34	N 76-3-43.0990 W	142.97
4	S 89-16-3.7833 W	1336.57	35	N 76-14-14.2999 W	371.94
5	S 0-4-12.6900 E	1344.79	36	N 75-42-53.8384 W	249.95
6	S 89-21-23.8814 W	1751.98	37	N 76-18-41.2784 W	283.55
7	S 24-9-51.9765 E	139.67	38	N 61-56-15.5244 W	152.37
8	S 13-10-20.6957 E	140.64	39	N 14-5-4.6259 E	897.15
9	S 3-59-27.5746 E	125.59	40	N 52-48-47.7628 E	146.52
10	S 2-36-8.7651 W	128.33	41	N 89-8-26.7832 E	239.51
11	S 3-24-59.4753 E	116.98	42	S 15-40-29.6881 E	265.92
12	S 6-48-29.2525 W	181.69	43	N 83-51-15.0957 E	243.99
13	S 30-31-48.3741 W	131.91	44	S 53-0-37.8338 E	578.38
14	S 38-31-0.7758 W	182.46	45	N 61-49-7.0600 E	296.17
15	S 23-44-59.9302 W	79.58	46	N 61-49-6.9726 E	94.55
16	S 17-56-23.5625 W	176.44	47	N 79-21-40.7799 E	82.92
17	S 88-49-9.7345 W	646.61	48	N 83-31-47.1887 E	59.47
18	N 0-47-46.8945 W	1303.97	49	S 84-55-13.1792 E	65.83
19	S 89-29-14.0645 W	3985.92	50	S 74-16-25.2880 E	527.29
20	N 1-24-27.1620 W	1313.24	51	S 75-4-51.1925 E	185.93
21	N 89-34-16.4130 E	2682.99	52	S 75-4-51.8499 E	218.89
22	N 1-32-59.0886 W	494.38	53	S 75-4-51.0901 E	259.32
23	N 1-46-4.5136 W	523.54	54	S 75-4-52.4045 E	162.50
24	N 1-17-11.1872 W	198.34	55	S 75-4-51.5643 E	184.51
25	N 1-17-10.7897 W	95.90	56	N 0-49-37.3497 W	1136.09
26	S 89-19-2.4724 W	1365.93	57	N 0-49-37.0379 W	500.65
27	N 1-12-33.3043 W	688.26	58	N 88-27-32.2675 W	505.54
28	S 89-39-56.4721 W	1240.01	59	N 88-27-32.6592 W	154.07
29	S 89-39-54.7689 W	661.95	60	N 83-56-3.3431 W	263.68
30	N 1-18-58.8817 W	845.10	61	N 83-14-31.6571 W	313.47
31	N 0-47-31.6087 W	94.13	62	N 78-24-21.5468 W	514.48

Course	Direction	Distance (feet)	Course	Direction	Distance (feet)
63	N 75-52-51.7733 W	729.35	112	N 44-49-28.1895 E	133.51
64	N 75-52-51.7607 W	545.34	113	N 54-7-5.3033 E	140.45
65	S 18-44-4.2215 W	392.78	114	N 60-51-6.2968 E	144.15
66	N 80-48-24.1787 W	101.42	115	N 67-0-40.7584 E	173.58
67	N 18-44-3.0574 E	190.04	116	N 63-51-11.1243 E	148.34
68	N 80-48-28.4346 W	323.03	117	N 59-19-21.6250 E	166.09
69	S 36-5-15.6309 W	65.73	118	N 51-20-23.3444 E	170.53
70	N 85-24-7.6521 W	179.59	119	N 52-28-52.2718 E	170.94
71	N 78-17-29.1596 W	54.70	120	N 58-37-17.7017 E	415.11
72	N 70-29-20.6981 W	57.52	121	S 42-15-26.5796 E	561.07
73	N 26-55-58.8351 E	26.00	122	S 23-40-39.3869 W	306.12
74	N 63-1-53.9650 W	99.99	123	S 26-24-1.6968 W	72.30
75	N 58-40-34.7527 W	133.42	124	S 36-56-25.6462 W	89.84
76	N 40-40-30.6018 W	195.04	125	S 49-6-55.3434 W	56.18
77	N 0-0-28.7378 E	78.21	126	S 19-50-34.3314 E	1153.69
78	N 40-18-37.8119 W	98.42	127	S 42-50-54.6272 W	112.10
79	N 20-11-12.7479 W	216.54	128	S 62-17-13.0096 W	58.12
80	N 66-20-37.2363 W	323.51	129	S 56-43-37.0031 W	42.43
81	N 85-16-15.0471 W	114.37	130	S 47-2-17.1764 W	206.10
82	N 79-17-33.3728 W	195.54	131	S 35-13-32.1300 W	62.32
83	S 67-56-12.5035 W	147.35	132	S 13-48-0.8253 W	177.10
84	S 76-0-47.1044 W	298.58	133	S 42-0-17.3049 W	93.02
85	N 0-41-53.2788 W	2332.01	134	S 0-38-53.1293 W	37.50
86	S 89-55-41.4899 E	1953.20	135	S 27-31-18.4377 E	54.18
87	S 1-32-2.4793 E	642.02	136	S 21-4-1.7902 E	167.44
88	N 89-28-53.5859 E	1233.83	137	S 75-44-34.3350 W	925.32
89	N 89-29-15.9883 E	754.33	138	S 20-10-47.1387 E	320.12
90	N 89-4-54.1581 E	504.99	139	S 81-11-42.3121 W	2106.60
91	S 17-41-25.1005 E	563.69	140	S 0-41-8.7701 E	1286.84
92	S 24-40-0.1260 E	161.74	141	N 86-56-11.0860 E	339.79
93	S 19-17-31.0519 E	623.89	142	S 0-37-51.6796 W	244.12
94	N 87-43-1.4077 E	386.38	143	N 87-4-59.9460 E	909.08
95	N 89-5-21.7755 E	506.92	144	N 3-15-38.2284 W	240.00
96	N 89-4-0.0551 E	538.02	145	N 3-9-48.6131 W	41.85
97	S 0-11-1.9891 E	922.57	146	N 72-53-30.8330 E	338.76
98	N 83-13-45.6172 E	20.00	147	N 1-44-5.8845 E	97.74
99	S 53-19-8.7324 E	139.03	148	N 10-58-3.4510 E	48.11
100	S 29-0-53.1731 W	106.62	149	N 0-34-1.7020 E	189.13
101	S 1-11-59.8490 E	262.34	150	N 56-46-58.8584 E	868.80
102	S 89-35-29.6787 W	49.21	151	S 20-21-13.1173 E	42.05
103	S 73-46-46.2966 W	123.00	152	N 74-47-31.6120 E	679.48
104	N 88-53-0.3206 E	2999.88	153	N 31-30-58.5535 E	1057.22
105	S 54-59-24.2099 E	69.92	154	S 20-18-30.0783 E	269.80
106	N 17-21-17.1150 E	272.93	155	S 14-53-13.2291 E	105.81
107	N 25-34-20.0641 E	252.90	156	S 1-6-36.1432 E	1950.44
108	N 37-20-46.3910 E	1181.30	157	N 88-43-20.7788 E	1626.30
109	N 89-14-14.2751 E	334.55	158	S 1-42-29 E	830.37
110	N 0-54-47.3211 W	239.33	159	S 0-4-21 E	281.85
111	N 38-29-15.5967 E	74.61	160	S 0-4-20 E	306.7

Course	Direction	Distance (feet)
161	S 0-15-17 E	261.5
162	N 86-6-3 W	78.37
163	S 0-23-33 E	378.57
164	S 0-23-34 W	585.58

Disclaimer: "For assessment purposes only. This description of land is not a legal description as defined in the Subdivision Map Act and may not be used as the legal basis for an offer for sale of the land described".